
2020-21 Re-Entry Recommendation

— July 20, 2020 —

Our Planning Priorities



- Health and Safety of Students and Staff
- Providing Highly Effective Learning Opportunities for All
- Flexibility and Responsiveness

Timeline To Date

- Late February - Early March - SDNB began preparations for school closures
- March 13 - the state temporarily closed all K-12 public and private schools
- April 16 - all K-12 public and private schools were closed for the remainder of the 2019-20 school year
- May 21- SDNB held its first 2020-21 Re-Entry Task Force Meeting
- June 22 - Wisconsin DPI releases Education Forward guidance; administration presents initial plan to Board of Education
- June 23 - information shared with all SDNB families on Re-Entry timeline
- July 5-12 - staff, family survey open for feedback regarding instructional options, safety priorities, etc.

Timeline To Date

Also since March 13 ...



- Weekly conversations / meetings with Waukesha County officials
- Weekly conversations / meetings with area superintendents, assistant superintendents, employment services directors, student services directors, business directors, etc.
- Weekly conversations, webinars, etc. with local, regional and state organizations
- Weekly meetings for SDNB district leaders

Stakeholder Feedback

- March 16 - End of the Year - Ongoing stakeholder conversations around instructional practices, family and student support, balancing instructional time, resource supports, etc.
- March 31 - Distance Learning Week 1 Staff Reflection Survey
- May 18 - Family end-of-year survey with distance learning questions
- June 1 - Distance Learning staff feedback survey
- July 6 - Parent and Staff Survey about Re-Entry options and safety precautions

SDNB Re-Entry Task Force

Ongoing Planning Resources



- [Waukesha County Department of Health](#)
- Waukesha County Superintendents and neighboring district plans
- American Academy of Pediatrics [Guidelines for Re-Opening Schools](#)
- [CDC Considerations for Schools](#)
- Wisconsin Department of Public Instruction's [Education Forward](#)
- [WIAA Guidelines](#)
- SDNB Task Force, Nurse, Administrators, Staff, Parents and others

Ongoing Planning Resources

- Wisconsin Association of School Nurses / Children's Hospital of Wisconsin
- Durham Transportation Services
- WASB, WASDA, WASBO, WASPA, WADA
- Von Briesen & Roper
- CESA #1
- And many, many others

Task Force

- Moving forward, will refer to task force as **Pandemic Response Team**
- Meets weekly - seven meetings to date
- Task Force subcommittees / planning areas:
 - Student learning
 - Student safety
 - Employee safety
 - Facility sanitation
 - Food service safety
 - Transportation safety
 - Athletics and activities safety
 - Events safety
- Subcommittees (some, not all) have also been meeting weekly


Task Force Members

- Joe Garza, Superintendent
- Kellie Sanders, Chief Academic Officer
- Patrick Miller, Chief Financial & Operations Officer
- Nicole Jones, Director of Employment Services & task force facilitator
- Andy Stefancin, Director of Buildings & Grounds
- Brandon Kostolni, Director of Technology
- Amanda Mazurkiewicz, Director of Student Services
- Kelli Kwiatkowski, Director of Secondary Teaching & Learning
- Cindy Jensen, Director of Food & Nutrition Services
- Brady Reinke, Director of Elementary Teaching & Learning / (former) Ronald Reagan Principal
- Royce Lindner, Orchard Lane Principal / (former) Director of Elementary Teaching & Learning
- Michael Fesenmaier, West Principal
- Kevin Fitzgerald, Eisenhower Activities & Athletics Director
- Pam Jesse, District nurse
- David Cotey, Coordinator of Communications

Task Force Subcommittee Members


- Kevin Gemignani, Eisenhower Associate Principal
- Jordan Napoli, West Activities & Athletics Director
- Teacher Coaches
 - Caroline Haebig, Digital Coach
 - Jennifer Schlie-Reed, Digital Coach
 - Monica Church, Special Ed Coach
- Teachers
 - Kaelyn Hogan, phy ed / health
 - Ben Chossek, phy ed / health
 - Natalie Baertschy, music
 - Nicole Thompson, Spanish
- Support Staff
 - Amber Kaufman, West athletic director administrative assistant
 - John Cervantes, lead groundskeeper
 - Donna Krohn, West administrative assistant
 - Karen Wiese, food services administrative assistant
 - Connie Giesfeldt, food production manager
 - Anne Warchol, community engagement specialist

Task Force Goals



Curriculum

Develop robust in-person and virtual curriculum options for students returning in the fall



Student / Family Safety

Develop safety guidelines for students and families to minimize exposure risk to COVID-19



Staff Safety

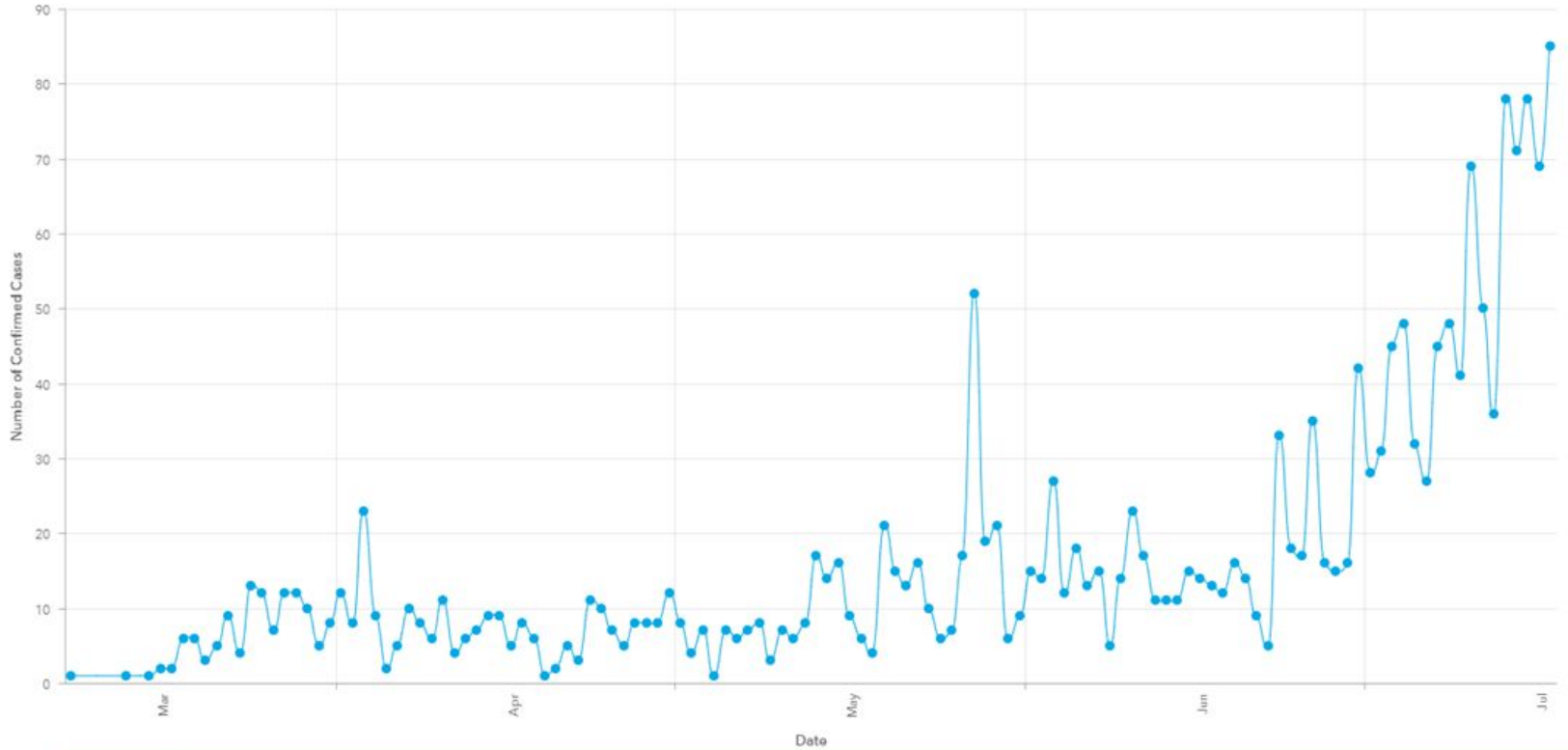
Develop safety guidelines for staff to minimize exposure risk to COVID-19

Our goal is to get students back into school while mitigating the spread of COVID-19, and data will drive our process and progress.



[To Mobile Version](#)

Daily Confirmed Case Count



SDNB Family Survey Results

Family Survey Results

Spring 2020

669 parents responded to these questions out of a survey with 1,165 total survey respondents

I feel the distance learning environment worked for my child during the final months of the 2019-20 school year?

- Strongly Agree 19% | Agree 48% | Disagree 18% | Strongly Disagree 16%

I feel my child received the same level of education through distance learning as they would have with face-to-face instruction?

- Strongly Agree 6% | Agree 25% | Disagree 43% | Strongly Disagree 27%

If the state allows school buildings to reopen and resume traditional instruction, would you be interested in enrolling your child(ren) in a online-only program for 2020-21 ... should the SDNB start a virtual/online school?

- Strongly Agree 9% | Agree 16% | Disagree 26% | Strongly Disagree 49%

Family Survey Results

For the detailed report, click [HERE](#).

- Survey open from July 5-July 12
- Sent to 4,620 families
- 3,055 responses

Family Survey Results

For the detailed report, click [HERE](#).

Please select your top three priorities regarding **health and safety practices** if school buildings are open for in-person classes in fall:

Elementary

Regularly scheduled and supervised hand washing / sanitizing	68.7%
Temperature screening for students and staff everyday	47.4%
Visitors and volunteers are limited on campus	37.1%
Staff are trained on CDC guidance to reduce likelihood of COVID-19 transmission	36.3 %

Family Survey Results

For the detailed report, click [HERE](#).

Please select your top three priorities regarding **health and safety practices** if school buildings are open for in-person classes in fall:

Secondary

Temperature screening for students and staff everyday	51.2%
Availability of masks/face-coverings for everyone	51.2%
Regularly scheduled and supervised hand washing / sanitizing	44.5%
Visitors and volunteers are limited on campus	34.8%

Family Survey Results

For the detailed report, click [HERE](#).

Please select your top three priorities for **cleaning / distancing safety practices** if school buildings are open for in-person classes in fall:

Elementary

Enhanced cleaning occurring in school	58.7%
Hand sanitizer is provided in each classroom and is frequently used	54.2%
Students do not share supplies with anyone else	36.4%
Limiting classroom seating to maintain social distancing	24.1%

Family Survey Results

For the detailed report, click [HERE](#).

Please select your top three priorities for **cleaning / distancing safety practices** if school buildings are open for in-person classes in fall:

Secondary

Regularly scheduled and supervised hand washing / sanitizing	68.7%
Temperature screening for students and staff everyday	47.4%
Visitors and volunteers are limited on campus	37.1%
Staff are trained on CDC guidance to reduce likelihood of COVID-19 transmission	36.3%

Family Survey Results

For the detailed report, click [HERE](#).

Elementary: If schools are allowed to reopen in the fall, how would you rank these three options?

Statement	First Choice	Second Choice	Third Choice
All students return to school full time with a regular schedule	1,087	246	300
Distance learning using a plan that is combination of in-person and virtual learning	394	1,087	152
Full-time distance learning for all students	154	198	1,281

Family Survey Results

For the detailed report, click [HERE](#).

Secondary: If schools are allowed to reopen in the fall, how would you rank these three options?

Statement	First Choice	Second Choice	Third Choice
All students return to school full time with a regular schedule	836	256	335
Distance learning using a plan that is combination of in-person and virtual learning	434	901	92
Full-time distance learning for all students	159	201	1,067

Family Survey Results

For the detailed report, click [HERE](#).

Elementary: Which of the following statements are true when thinking of the 2020-21 school year?

Statement	% of respondents
My child will rely on school district transportation (school bus).	57.4
My child will require supervision at school before the day begins.	13.8
My child will require supervision at school after the school day lets out.	12.8
Carrying out distance learning from home will place a considerable burden on my family.	48.7
My child cannot carry out distance learning at home due to lack of childcare or our employment requirements.	31.9
My child will rely on the school district for meals and receiving enough food.	3.2
None of the above	20

Family Survey Results

For the detailed report, click [HERE](#).

Secondary: Which of the following statements are true when thinking of the 2020-21 school year?

Statement	% of respondents
My child will rely on school district transportation (school bus).	47.9
My child will require supervision at school before the day begins.	0.3
My child will require supervision at school after the school day lets out.	0.4
Carrying out distance learning from home will place a considerable burden on my family.	23.1
My child cannot carry out distance learning at home due to lack of childcare or our employment requirements.	8.9
My child will rely on the school district for meals and receiving enough food.	2.1
My child will participate in activities or athletics for the 2020-21 school year if they are allowed to be offered	64.6

Family Survey Results

For the detailed report, click [HERE](#).

As it relates to bussing for the 2020-21 school year, which of the following is your selection for transportation?

Statement	% of Elementary respondents	% of Secondary respondents
I have opted out of bussing in the past and will do so again this year	16.9	22.1
I have opted out of bussing in the past but my child(ren) will be riding the bus this year	1.7	1.2
We will be opting out of bus riding this year.	9.6	13.9
We will be opting out of bus riding for at least the first semester based on COVID-19	12.6	9.3
My child(ren) will be riding the bus to and from school only if masks / face coverings are required.	22.8	26.2
My child(ren) will be riding the bus to and from school no matter what the safety guidelines are.	42.7	32.5

Family Survey Results

For the detailed report, click [HERE](#).

Based on previous answers, which of the models for reopening schools do you prefer?

Model	% of Elementary respondents	% of Secondary respondents
In-Person Learning: The vast majority of students attend school in-person, five days per week, with limited social distancing available. Some students (those with documented health concerns or for families that are uncomfortable returning) may participate virtually on an as-needed basis.	63.5	56.0
Physically Distanced Learning: To support physical distancing, students attend school using a plan that is a combination of in-person and virtual learning. Students attend on an alternating schedule so not all students are in the building at one time.	26.6	32.7
Virtual Learning: All students attend school virtually using computer devices and digital instructional models from home.	4.5	5.9
Family Choice to participate in Virtual Learning: We want our child(ren) to participate in virtual learning for at least the first semester due to Covid-19	4.5	4.1
Family Choice to participate in Virtual Learning: We want our child to participate in virtual learning for at least the first semester due to this opportunity being the best learning option for our child(ren).	0.9	1.3

Family Survey Results

For the detailed report, click [HERE](#).

- Many said it was difficult to make decisions because they don't know all of the information yet
- Several commented about not knowing what numbers of new cases will look like when school starts
- Strong desire to have more teacher interaction and instruction in a virtual/distance scenario
- Strong opinions related to face masks and social distancing topics
- Many suggested students need to be back in school for social emotional and family financial/childcare options

SDNB Staff Survey Results

Staff Survey Results

For the detailed report, click [HERE](#).

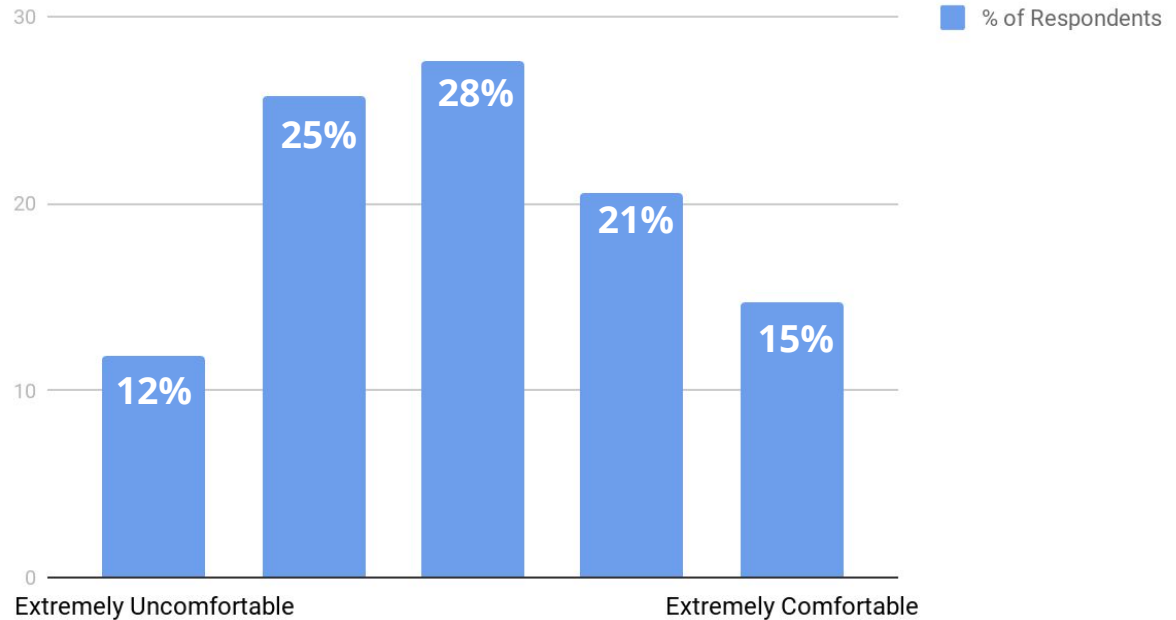
- Survey open from July 5-July 12
- Sent to all staff members
- 388 responses

Staff Survey Results

For the detailed report, click [HERE](#).

How comfortable do you feel about returning to school facilities / reopening schools in the fall?

Comfort Range



Staff Survey Results

For the detailed report, click [HERE](#).

How important are the following safety measures to you in considering a return to school/work in the fall?:

	Very Important	Neutral	Not Important
Social Distancing	68%	28%	4%
Face masks/shields for staff	70%	18%	12%
Face masks/shields for students	62%	25%	13%
Hand washing/hand sanitizer availability	97%	2%	<1%
Sneeze shields on office desks	49%	39%	12%

Staff Survey Results

For the detailed report, click [HERE](#).

How important are the following safety measures to you in considering a return to school/work in the fall? (continued):

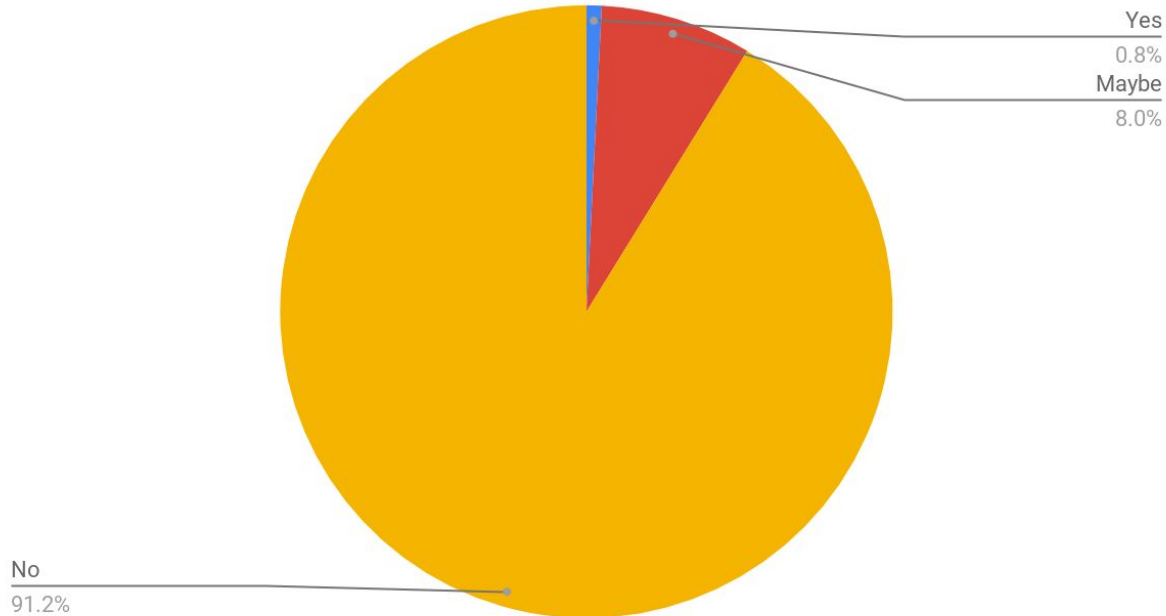
	Very Important	Neutral	Not Important
Daily temp checks of all staff	49%	39%	13%
Daily temp checks of all students	61%	28%	10%
Daily health screener by all students	40%	44%	16%
Daily health screener by all staff	35%	46%	19%
Enhanced cleaning procedures	91%	8%	<1%

Staff Survey Results

For the detailed report, click [HERE](#).

Are you UNABLE to return to work based on belonging to a high-risk population per the CDC AND based on the direction from your physician?

% of Respondents

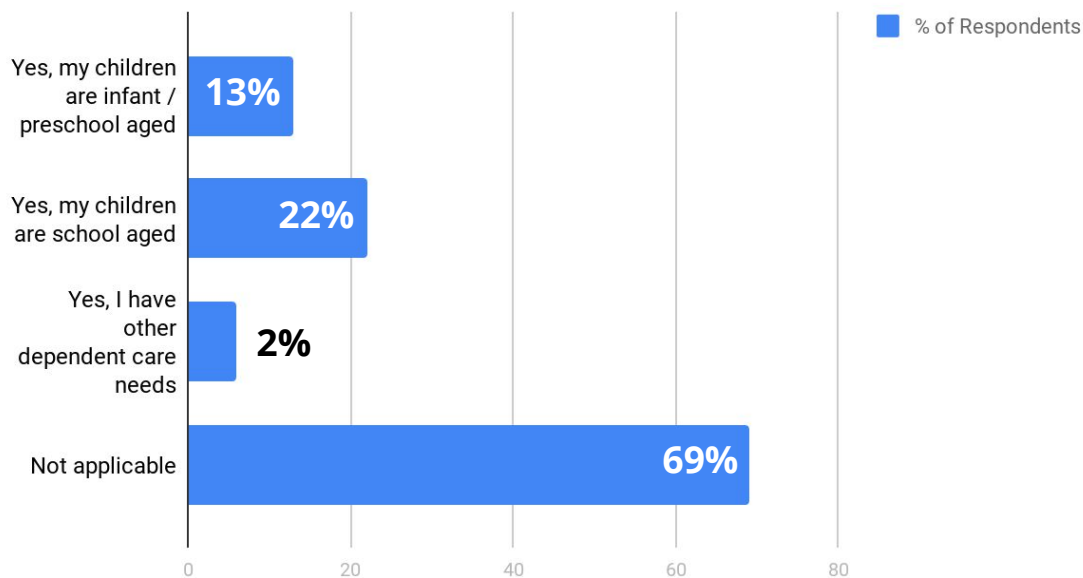


Staff Survey Results

For the detailed report, click [HERE](#).

Do you have concerns about returning to work due to undetermined / unknown childcare / other dependant needs?

All Staff



Staff Survey Results

For the detailed report, click [HERE](#).

- Good for families to have a choice of distance or in-person
- Time provided to plan and balance management of in-person and distance options if teachers must do both
- Importance of maximizing use of protective gear for staff and students along with distancing and cleaning procedures to keep everyone safe
- Concerns about safety of the teaching environment for both staff and students
- Concerns about spreading the disease in their home to high-risk family members

Recommendation, Safety Plans and More...

Recommendation

- Our goal is to return to school for full, in-person instruction five days a week AND provide a full distance / virtual option for those who want / need it for at least the first semester
- Continue to investigate / plan for hybrid distanced learning models as needed to remain fluid during this evolving health situation

Rationale

- We believe students learn best and benefit from in-person instruction.
- We will be creating smaller class sizes by providing the all-distanced learning option for families.
- While we cannot assure prevention of COVID-19 contraction for all at all times, we believe we can mitigate the spread / risk of spread by following guidance of key partners and leading organizations.
- While we continue to investigate / plan for hybrid models in the event one eventually makes sense for our district, we continue to have concerns about the feasibility of those models.
 - Continued pressure on families / employees in regards to alternating schedules, days off during the week, etc.
 - Staffing resources and expectations

Our Planning Priorities



- **Health and Safety of Students & Staff**
 - Put protocols in place to keep students and staff as healthy as possible
- **Providing Highly Effective Learning Opportunities to All**
 - Goal is to return to five-day in-person instruction
 - Provide distance learning for those who want/need it
 - Continue to plan for hybrid model when / if needed
- **Flexibility and Responsiveness**
 - Use data to monitor process and progress
 - Be able to adjust to new info
 - Plan for smooth transition to improved distance learning when / if needed

Scenario



- *Goal:* students attend face-to-face instruction at school five days a week
- Elementary students assigned a classroom as usual which will become their cohort
- Middle / high school modified block schedule
- Interactions between groups of students will be limited
- Large group interactions will be redesigned (entry, passing times, recess, lunches and events)

Strategies



- Reduce student / staff exposure
- Work with Waukesha Co. Dept. of Health to monitor data and quickly respond to metric changes
- Mitigate spread of virus through targeted changes to facilities, gatherings, and transition congestion areas that create greatest risk of spread
- Target response to positive cases and close contacts in partnership with WCDH with intent to avoid closures
- Offer virtual option for students and families unable to return

Data



- Student / staff attendance (positive case in a classroom, cohort or building, community spread within a classroom or cohort)
- New weekly cases in SDNB area
- Number of students / staff presently quarantined
- County metrics focused on burden (number of cases per two-week period) and trajectory (shrinking, no significant change, growing)
- State metrics

Mitigation



- Monitor student / staff symptoms daily
- Enhance facilities (barriers, hand-washing stations, fill stations, ventilation)
- Follow daily cleaning protocols, regular deep cleaning
- Change behaviors (health / hygiene, mask wearing, social distancing)
- Enhance student bus precautions
- Rethink common areas, transitions, congestion areas
- Adapt visitor, volunteer protocols
- Reinvent large gathering events (parent nights, athletics, etc.)

Draft Safety Recommendations

Universal Precautions

- Regular hand washing / sanitizing encouraged throughout day
- Staff given professional learning around identifying students who may be symptomatic
- Students who are symptomatic given separate place to wait to be picked up
- Internal doors left open whenever possible to reduce need for contact
- No in-person field trips for first semester

Busing

- Students will be encouraged to wear facial coverings
- Bus driver will have a facial covering
- Students will be assigned seats

Draft Safety Recommendations

Students Entering / Exiting Building

- Students encouraged to wear facial coverings
- Students riding bus will have designated door
- Parent pick-up/drop-off will have designated door
- Student drivers will have designated door
- Elementary students entering late / leaving early to be signed in / out in vestibule; only student may enter main school section
- Secondary students entering late / leaving early will need parents call to attendance; only student will be in building

Recess

- Staggered or play areas to be portioned off to reduce number of students outside
- Distancing to be encouraged
- Students expected to wash hands / use sanitizer before & after recess
- Indoor recess option to be considered as long as it can be properly supervised

Draft Safety Recommendations

Lunch

Elementary

- Students to eat in classrooms or in lunchroom with limited social distancing (half as many students per table than usual)
- School-provided lunches will be grab-and-go
- Lunch items delivered by parents / guardians to be left in vestibule outside of office
- Food allergies to be noted; students will be seated in a way that does not isolate them & food items that are allergens will not be allowed in classrooms

Secondary

- Students to eat in lunchroom or other designed locations with some physical distancing
- Students to pre-order grab-and-go school lunches
- Expansion of open campus during lunch
- Eliminate order/delivery to reduce number of people entering building

Draft Safety Recommendations

Student movement

Elementary

- Specials to be located in homeroom; teachers to travel to classrooms
- Book checkout facilitated by library assistant; students will not travel to library
- Departmentalized classes in upper elementary to be done by having teachers rotate (exception - math)
- No assemblies, concerts or field trips scheduled until further notice, unless done digitally

Secondary

- One-way hallways and staircases wherever possible
- Classroom doors open so students do not need to touch handles
- Exit and entry for open campus and Career and Service-Based Learning done through designated entrances
- Water fill stations to replace water fountains

Draft Safety Recommendations

Visitors

- No non-essential visitors allowed into building during school day
- No volunteers
- IEPs and parent-teacher conferences to be done virtually
- Parent / administrator meetings should be done by appointment
- Items dropped off at elementary schools to be left in the vestibule outside front office
- Encourage items to be dropped off at secondary schools be only essential (i.e. medication)
- Parents dropping off secondary students should not enter the building
- All visitors required to wear a face covering

Draft Safety Recommendations

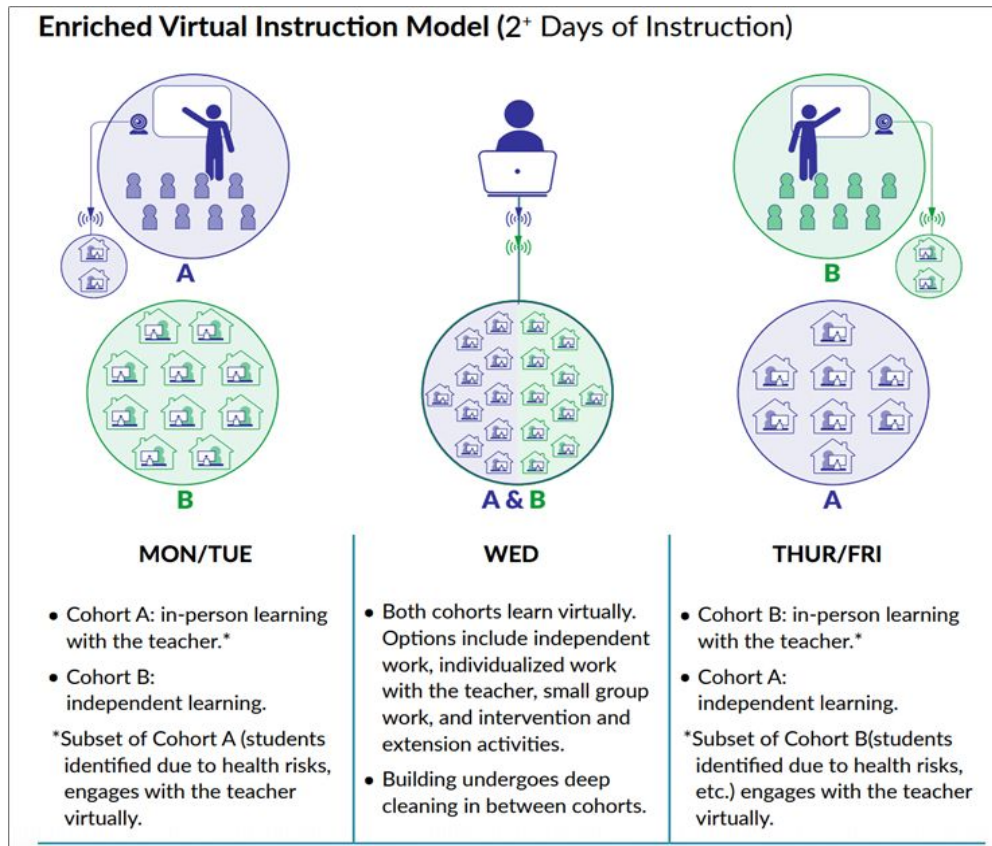
School Signage

- Entry / exit signs for doors, hallways (elementary)
- Directional signage for hallways, stairwells (secondary)
- Signage reminders to wear face coverings, social distance, wash hands and stay home if sick
- Signage emphasizing hand washing / drying in restrooms
- Classroom signage reminders to not share supplies or personal materials
- Physical distance signage in high congestion areas or where students tend to form lines (elementary) or large group areas (secondary)

What About a Hybrid Model?

- Continue to investigate / plan for hybrid distanced learning models as needed to remain fluid during this evolving health situation
- Reduced cohort size allowing for appropriate physical distancing
- Continuity of learning: flex between this model and full virtual if / when cohorts are exposed to the virus (or if / when increased community spread in New Berlin)

Example →



Possible Logistics of Hybrid

Elementary	Secondary
Students remain in cohort within classroom	Students remain in cohorts as much as possible
Desks spaced 6 feet apart, all facing one direction	Desks spaced 6 feet apart, all facing one direction
Specials teachers come to classrooms	Lunch periods staggered, spread out throughout buildings
Lunch in classroom	No visitors / volunteers in buildings
Staggered entry / exit for buses, parent drop-off / pick-up	Masks encouraged in hallways
Masks encouraged in hallways (age--appropriate)	Frequent hand washing encouraged
Masks worn by drivers, assigned seating, hand sanitizer	Staggered entry / exit for buses, parent drop-off / pick-up & student drivers
Staggered recess periods and partitioned outdoor spaces	Masks worn by drivers, assigned seating, hand sanitizer
Frequent hand washing encouraged / supervised	One-way traffic in hallways
No visitors / volunteers in buildings	

How Will Distance Learning Look Different?

Elementary examples:

- New instruction to occur at a rate comparable to in-person instruction
- Weekly plan available to families Monday mornings
- Teachers facilitate daily live class morning meetings to lay out the day and provide students opportunity to meet with the teacher and each other
- All new instruction done by teacher either in a synchronous or recorded manner
- Enhanced opportunities for individual and small group support and intervention

How Will Distance Learning Look Different?

Secondary examples:

- Additional structure, similar to a schedule as if we were in-person
- Minimum of two scheduled synchronous (live) meetings per course, per week
- Week-long expectations set by Monday morning
- Same online format for each course
- Attendance will be taken each day
- Increased Infinite Campus (IC) updating regarding grades

How will Special Education Services look?

- Services consistent with IEP
 - Delineated for different scenarios (i.e. in-person, virtual opt-in, mandatory closure)
 - IEP teams determine location of services for students who opt-in to virtual/distance learning (i.e. virtual, in-person, or combination)
 - Mandatory closures require all instruction to be distance / virtual for safety
- Staff will prepare specially designed instructional (SDI) plans at start of school year with parent input to support flexibility / transition with anticipated closures
- Specialized plans, that may include homebound instruction (barring a mandatory closure), will be in place for medically fragile students
- IEP teams must consider COVID Impact Services and Supports within 6 months of re-entry
 - [WI DPI Bulletin 20.01](#)
- Providing advanced preparation for special educators to ready for re-entry services, caseload

Other Considerations

Will we require masks?

We are requiring masks for staff, and we are considering requiring masks for students grades 4-12, but will continue to monitor ongoing guidance from local, state and federal health officials.

Could we consider a soft opening, with students returning to school in stages vs. all at once?

That is a measure the SDNB is still considering as a means to allow for baseline testing of students, allow students to get to know staff in smaller groups, allow more professional development, and to mitigate the spread of COVID-19.

Could there be calendar changes to allow for more teacher collaboration days?

That is also under consideration and may be necessary.

What's Next?

- July 21 - Message to Families & Staff regarding tonight's discussion
 - Content also provided on the SDNB website and added regularly
- July 27 through Aug. 3 - Family "commitment" survey
 - Will give families an opportunity to make the choice that is best for their child(ren), with the knowledge that the SDNB will remain flexible as data, information changes
- Ongoing - Detailed Action Plan Development
- Ongoing - Continue to Monitor Evolving Guidelines / Health & Safety Information
- Ongoing - Continue to Consult with Neighboring Districts and County Officials
- Ongoing - Additional Family Communications Leading Up to the First Day of School

Discussion