

Stoneware (the Cloud)

Stoneware is an online portal that allows users to connect to district resources quickly and easily all in one location.

To access Stoneware, use one of the following methods:

- Click on the Student or Staff>Tools page on the district website, and then click on the Stoneware Login link in the center area of the page.
- Or, open an Internet browser and type: <https://cloud.nbexcellence.org> in the address bar.

When logging in, use your network username and password.

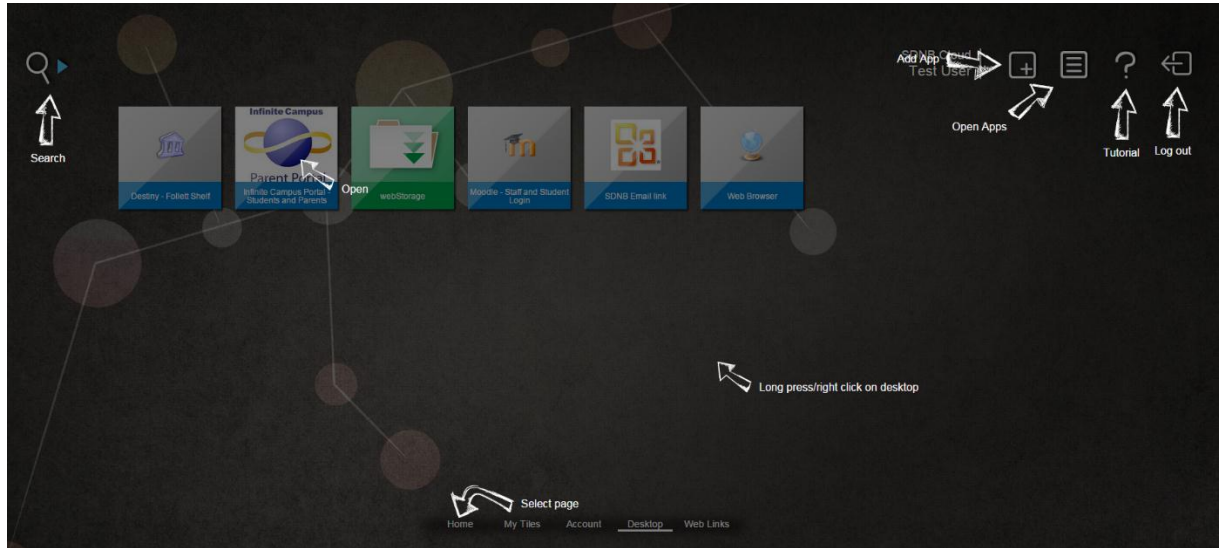
Through our current configuration of Stoneware, users have links to the following web sites:

- *Infinite Campus (Student Information System)
- Kace (technology Help Desk)
- Lifesize (Video Recorded Courses)
- *Moodle
- Compass Learning
- Opac (Library Catalog)
- Office 365 Web Email
- SchoolDude (Building and Grounds ticketing system)

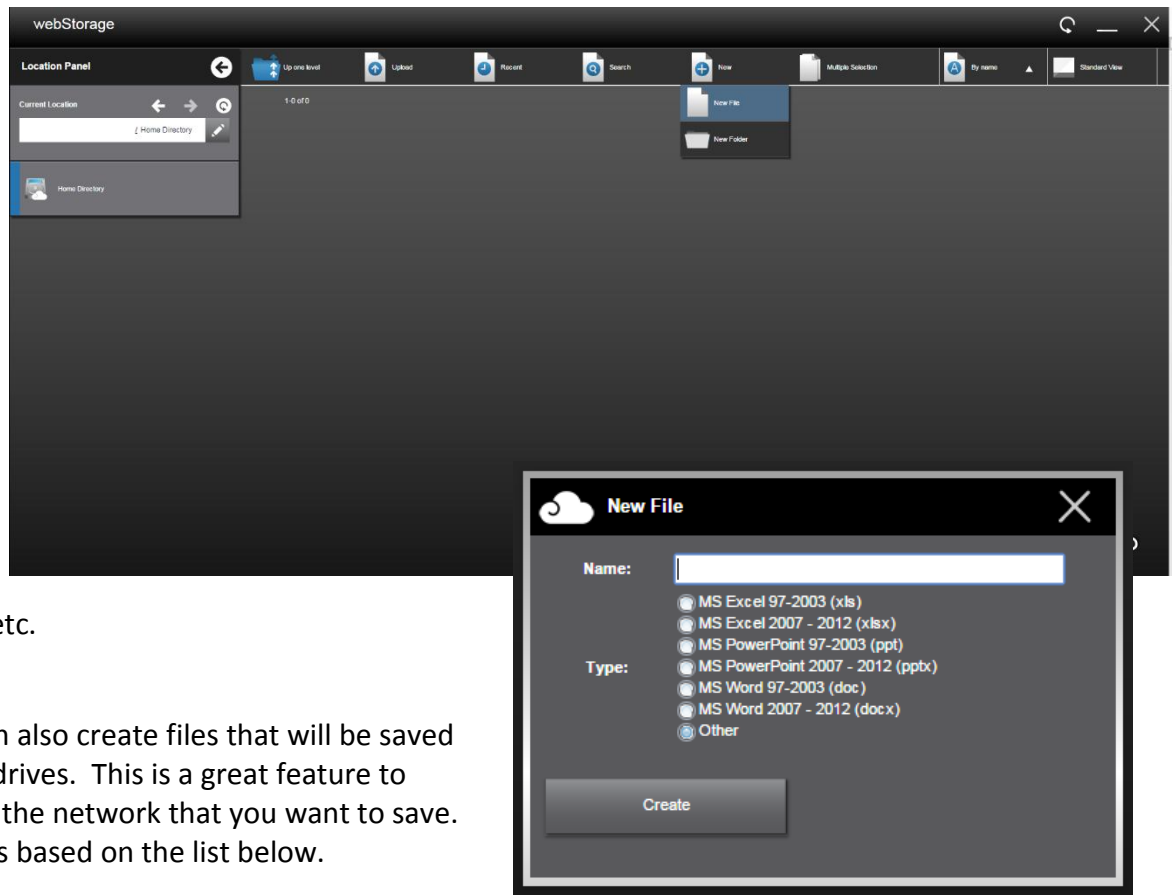
*Application is set up to allow single sign-on. Single sign-on allows you to enter your username and password the first time you access the software. The program then remembers your login information and will no longer prompt for the information.

The screenshot shows a web browser window with the URL <https://cloud.nbexcellence.org>. The page header displays the logo for "Expect Excellence School District of New Berlin". The main content area features a blue background with white clouds and a globe. On the left, there are "Additional Links" for "Reset Password" and "System Check". On the right, there is a "Login" form with fields for "Username" and "Password", and a "Log In" button. A red box highlights the login form, and a red arrow points to it from a text box that says "Log in with your network credentials." The footer contains the copyright notice "© Stoneware, Inc. 1999-2012".

After loading, you will see your Stoneware Desktop with shortcuts to web resources and the **webStorage** icon. You can click on each icon to access the web service. Each web service will ask for your log-in credentials. The screenshot below includes details on the new icons.



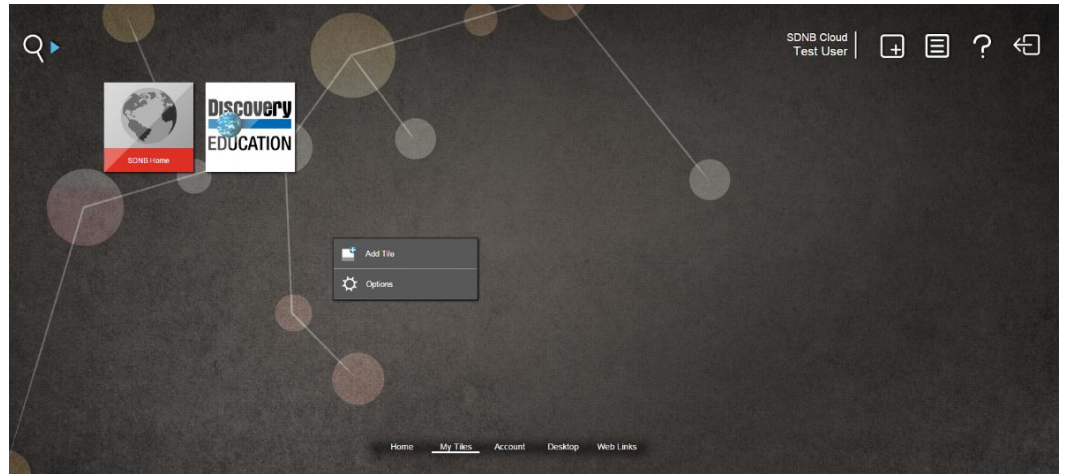
A new feature of this version of Stoneware is called **webStorage**. This feature replaces the MyFiles feature. Accessing your **webStorage** allows you to connect to your H: drive. You can access the contents of your H: drive as well as upload files to your H: drive away from school. **webStorage** also gives you access to your district Shared drives. A great addition to this update in **webStorage** is that you can now access your district drives from any device – phone, tablet, laptop, Chromebook, etc.



In webStorage, you can also create files that will be saved back to your network drives. This is a great feature to create files away from the network that you want to save. You can create the files based on the list below.

Stoneware also allows for single user login. Once in Stoneware, you can enter passwords for the various web applications so that they open automatically and log you in when you click on them. You can manage all of your passwords for these programs by clicking on the **Account** tab at the bottom of the Stoneware Desktop. If you change any of your web application passwords (i.e., Infinite Campus, Moodle, etc.), you must then update that stored password in **Password Manager**. After updating, click the **Update Stored Passwords** button and then close the window.

This version of Stoneware allows users to add their own tiles as shortcuts to additional websites that they want to keep. After clicking on the **My Tiles** tab at the bottom, you can right click on the desktop and choose Add Tile.



The **webStore** provides a list of quick links that are pre-created for users to add personal tiles. You can search the **webStore** by category, then add the tiles that you are interested in adding.

