



NEW BERLIN
WEST
 MIDDLE/HIGH SCHOOL
SCHOOL PROFILE



Contact Information

18695 W. Cleveland Avenue, New Berlin, WI 53146

PHONE: 262.789.6400 | FAX: 262.789.6442

PRINCIPAL:

Michael Fesenmaier | 262.789.6418 | michael.fesenmaier@nbexcellence.org

ASST. PRINCIPAL:

Greg DePue | 262.789.6415 | gregory.depue@nbexcellence.org

ASST PRINCIPAL:

Julie Kader | 262.789.6416 | julie.kader@nbexcellence.org

ATHLETICS & ACTIVITIES DIRECTOR:

Jordan Napoli | 262.789.6409 | jordan.napoli@nbexcellence.org

ASSISTANT TO THE PRINCIPAL:

Donna Krohn | 262.789.6423 | donna.krohn@nbexcellence.org

WEBSITE: www.nbexcellence.org/schools/west/

SCHOOL HOURS: 7:30 a.m. to 3:00 p.m.

Note from the Principal



Thank you for your interest in our community and our schools. As we welcome you to the School District of New Berlin and New Berlin West, our goal is to provide an educational experience for students that allows them to grow in their skills, explore areas of interest, and be supported as they continue to reach beyond their level of comfort to develop their knowledge, skills, and dispositions to be successful during and beyond their years of experience within our schools.

We promote a culture that encourages students to individualize their learning experiences to fit their needs and future goals. Our philosophy is one of continuous improvement for ourselves and our students. We are proud of our school and community and will work to continually improve the experience for students, understanding that their achievements are what demonstrate our success. We hope to welcome you as part of this experience.

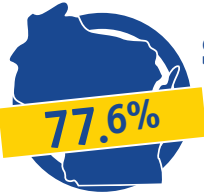
We invite you to join us.

Michael Fesenmaier, Principal

The SDNB Student Experience

- Rigorous Academics
- Personalized Goal Setting, Planning and Mentorship
- Embedded Career and Technical Education
- "Show What You Know"
- Strong post-secondary alignment

QUICK FACTS About New Berlin West



STATE REPORT CARD

Exceeds Expectations

77.6%

SCHOOL POPULATION

1,117 STUDENTS

CURRENT ENROLLMENT
 375 GRADES 7-8 742 GRADES 9-12

15:1 STUDENT/TEACHER RATIO



87% of graduates plan to continue their education

75% Four Year College or University

25% Junior College or Vocational/Technical School

COURSE BY THE NUMBERS

187 COURSE OFFERINGS

25 AP COURSE OFFERINGS

3 CAPSTONE COURSES

\$2 MILLION+ Value of Scholarships earned in 2017

SUCCESS BEYOND THE CLASSROOM



2017 DECA DIAMOND CHAPTER (W/ 11 INTERNATIONAL QUALIFIERS)

3 SKILLSUSA NATIONAL QUALIFIERS

2016 STATE SOFTBALL CHAMPIONS



BOYS VOLLEYBALL THIRD STRAIGHT STATE TRIP (CO-OP WITH EISENHOWER)



Newsweek

BEST SCHOOLS IN AMERICA 2003-2015

The Washington Post

AMERICA'S MOST CHALLENGING HIGH SCHOOLS 2013-2016

USNews

BEST HIGH SCHOOLS IN AMERICA 2012-2016

#3 in State by MacIver Institute



NEW BERLIN WEST VIKINGS

ATHLETICS, CLUBS & ACTIVITIES

As part of our co-curricular offerings, in which over 80 percent of our students participate, we offer opportunities which are academic, social, athletic, music and arts related. These clubs and activities allow students the opportunity to gain the skills identified in our district's Vision & Values.

HIGH SCHOOL ATHLETICS

BOYS:

Cross Country
 Football
 Soccer
 Volleyball (Co-Op)
 Basketball
 Swimming
 Wrestling
 Baseball
 Golf
 Tennis
 Track & Field

GIRLS:

Cheer & Stunt
 Pom & Dance
 Cross Country
 Golf (Co-Op)
 Swimming/Diving
 Tennis
 Volleyball
 Basketball
 Soccer
 Softball
 Track & Field

MIDDLE SCHOOL ATHLETICS

BOYS:

Cross Country
 Basketball
 Track & Field
 Wrestling

GIRLS:

Cross Country
 Basketball
 Track & Field
 Volleyball

CLUBS & ACTIVITIES

Academic Decathlon	Norse Code
Art Club	Orchestra
Band	Robotics Team
BUILD Team	Science Club
Choir	Ski & Snowboarding Club
Club Unify	SkillsUSA (MS/HS)
DECA	Spanish Honor Society
FIRST Robotics	Student Ambassadors
French Club	Thespan Society
French Honor Society	Viking Conditioning
Forensics	Yearbook (MS/HS)
Green Club	
HOSA	
Math Club	
National Honor Society	

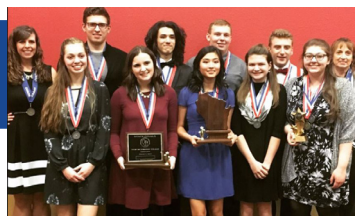
ACT COMPOSITE SCORE

22.9 WEST **20.5** STATE AVERAGE

ACT Quartile Values

Average ACT score based on class rank. Quartile 3 is the average score of the top 25 percent of the senior class.

Quartile	English	Math	Reading	Science	Composite
Q3 (Top 25%)	26	27	28	26	27
Q2 (Top 50%)	22	24	23	23	23
Q1 (Top 75%)	18	18	18	20	19



ACADEMIC DECATHLON TAKES SECOND IN STATE

Our Academic Decathlon team was the 2017 D2 runner-up. The Vikings earned the state title in the interview category and third in the super quiz.



TOMMY AWARD WINNERS

"South Pacific" earned two 2017 Overture's Tommy Awards, including one for Outstanding Orchestra. The Tommy Awards program recognizes and encourages excellence in high school musical theater.



Our School

New Berlin West is a comprehensive middle/high school that guides and supports students to prepare for their appropriate post-secondary experience. We work with students through their Academic and Career Plan (ACP) to identify both coursework and learning experiences that promote both their achievement-based and dispositional development, making their learning applicable to potential post-secondary experiences. One of two secondary schools in the district, New Berlin West serves approximately 800 high school and 300 middle school students in an upper middle class community.

Vibrant Community

New Berlin West focuses on a community that provides opportunities and supports all learners to engage with practices that promote skill development. With a focus on the core subjects through involvement and depth presented around an array of extended experiences within and outside of the classroom, students are able to explore options, develop skills and grow as individuals. The faculty and staff are an integral part of the school community and outstanding resource. Parent involvement, interest and support complete the circle of support and dedicated interest in student success.

Parent Involvement

The school is fortunate to have an involved parent community that is interested in the academic, social, and community success for their children. Parents show interest in their children and their learning while working as partners with the school to ensure appropriate opportunities, involvement, and experience for their student(s). We value the involvement of parents in all ways that positively impact our students and help them to have choice in their preparation for learning beyond high school.

Well-Rounded Learning Experience

- A rigorous curriculum with significant options for students seeking a college preparatory experience.
- Guidance from counselors and other staff to develop and support the student's Academic and Career Plan.
- Weekly advisory time targeted to support student learning pathways, digital citizenship, ACT preparation, and monitor learning and goal plan progress.
- A safe and secure learning environment within the school that supports and reinforces respect.
- Course options, programs, and planning aligned to our College and Career Readiness Vision of Our Graduate.
- Six levels of world language offerings in the areas of Spanish, French, and Chinese.
- Career and Service Based Learning offers students exposure to careers through hands-on work experience and encourages civically engaged citizenship.
- Options for students to take coursework at their level and progressively advance to meet their learning needs.
- School structure allows for middle school students to take high school coursework within their building and schedule.
- A full range of activity, arts, and athletics offerings to support student involvement and learning within and beyond the classroom.
- College in High School programming including 26 AP course offerings and other additional post-secondary options for students within and outside of our campus.
- On-site Certified Nursing Assistant program.
- Specific programming aligned to pathways in manufacturing, engineering, health sciences, technology, education and entrepreneurship.

Benefits of a Combined Middle/High School...

- Allows students to have better access to accelerated courses such as advanced math or world language courses, eliminating the need to travel outside their home school in order to attend such classes.
- Creates more collaborative opportunities for our teachers so there is more of a seamless curriculum across grades 7-12.
- Reduces the number of transitions students have to make to new school environments, providing additional stability - especially beneficial during the critical adolescent years.
- Simplifies coordination for families with multiple students - from parent communication to carpooling.

Course Offerings

MIDDLE SCHOOL: Core Requirements

- English 7, & Honors
- English 8, & Honors
- Science 7
- Science 8, & Honors
- Social Studies 7
- Social Studies 8
- Math 7
- Math 7b/8
- Math 8
- Algebra I
- Geometry
- Health
- C2: Careers & Communications
- Phy Ed 7
- Phy Ed 8

Electives

- Art 7
- Art 8
- Exploring Computer Science I
- Exploring Computer Science II
- 7th Grade Elective Wheel
- Writing for Publication
- PLTW Gateway: Engineering & Design
- PLTW Gateway: Electricity & Robots
- PLTW Gateway: Green Architecture
- Orchestra
- Band
- Choir
- French I & II
- Spanish I & II
- Mandarin Chinese I & II
- Latin (Online)

HIGH SCHOOL: English

- English 9, 10, 11 (Regular, Honors)
- Speech
- Video production I & II
- AP Language & Composition*
- AP Literature & Composition*
- Journalism I,II,III, & IV
- Dramatic Literature
- American Film: The Two-Way Mirror
- Introduction to Mass Media
- Literature of War
- Poetry & Creative Writing Workshop
- Sports & Society
- European Literature
- English 12 Composition
- Oral/Interpersonal Communication*

Math

- Geometry I & II
- Algebra I & II
- Financial Algebra
- Statistics
- AP Stats*
- Functions & Trigonometry
- Pre-Calculus
- AP Calc AB*
- AP Calc BC*
- College Technical Math 1b*
- UW Waukesha Calculus & Analytic Geometry 3*
- UW Waukesha Linear Math*

Science

- Biology &
- Biology Honors
- UW Waukesha Heredity*
- Human Anatomy & Physiology I & II
- Chemistry & Chemistry Honors
- AP Chemistry*
- Environmental Science
- AP Environmental Science*
- Earth/Space Science
- Astronomy
- Physics
- AP Physics I*
- AP Physics II*
- AP Physics C*
- PLTW Principles of Biomedical Science*

Social Studies

- World Studies
- AP US History*
- AP European History*
- Wars
- Government
- Economics
- AP Government & Politics*
- Philosophy
- Early World History
- AP Human Geography*
- Psychology
- AP Psychology*
- Sociology
- AP Microeconomics*

Physical Education

- Nutrition
- Personal & Lifetime Fitness
- BFS: Better, Faster, Stronger
- Advanced BFS
- Advanced PLF: The Active Lifestyle
- Team Sports
- Individual Sports
- Online Phy Ed Concepts
- Lifeguard

Business

- Personal Finance
- Accounting (UW-Waukesha)*
- Principles of Marketing*
- Sales & Advertising
- Sports/Event Marketing
- Entrepreneurship
- Concepts in Employability I & II

Computer Science

- Exploring Computer Science
- Computer Programming
- Web Development I & II
- Game Design
- AP Computer Science A*
- AP Computer Science Principles*

Health Care

- Health Career Explorations*
- Principles of Customer Service in Health Care*
- Medical Terminology*
- Intro to Computing for Health Care*
- Certified Nursing Assistant Program*

Engineering & Technology

- PLTW Intro Engineering Design*
- PLTW Principles of Engineering*
- PLTW Civil Engineering/Architecture*
- PLTW Digital Electronics*
- PLTW Engineering Design & Development (Capstone)
- Introduction to Manufacturing
- Construction I & II
- Printing & Publishing I, II & III
- UWM Architecture (Online)

ART

- Art Survey
- Ceramics I & II
- Digital Photography
- Drawing I & II
- Painting I & II
- Art Design
- Sculpture I & II
- AP Art I & II*
- AP Art History*

World Language

- French I, II, III, IV, V, VI
- AP French Language & Culture*
- Spanish I, II, III, IV, V, VI
- AP Spanish Language & Culture*
- Mandarin Chinese I, II, III, IV, V, VI
- AP Mandarin Chinese*
- Latin I & II (Online Format)

Music

- Concert Choir
- Concert Strings
- Jazz Ensemble
- Symphonic/Marching Band
- Treble Choir
- Chamber Singers
- A Cappella Choir
- Chamber Strings
- Music Appreciation
- AP Music Theory*

Career/Service Based Learning

- Mentorship
- Student Aide
- Service Learning
- SDNB Co-Op
- Internship
- Youth Apprenticeship
- Concepts in Employability & HR I & II
- GPS
- WCTC Dual Enrollment Academy*

Interdisciplinary Courses

- Academic Decathlon
- UW-Waukesha EDU 201: Concepts & Issues in Education

Interdisciplinary Capstone Courses

- Advanced Innovation & Design
- AP Seminar
- AP Research

College & Career Ready

The School District of New Berlin believes in preparing “College and Career Ready Graduates”. All students should graduate confident that their knowledge, skills, and dispositions are sufficient to pursue the personal, academic, social and career goals that they set for themselves. We believe this is our collective work, as such, we strive to engage our extended community in a variety of purposeful learning opportunities for our students.

Our College and Career Readiness focus in middle and high school builds off of the awareness developed during students’ elementary years and expands to include targeted exposure and preparation personalized to each student’s post-secondary plan.

EXPOSURE GRADES 7-12

(Targeted by Grade Level)

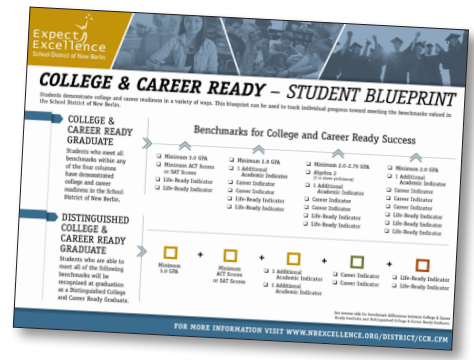
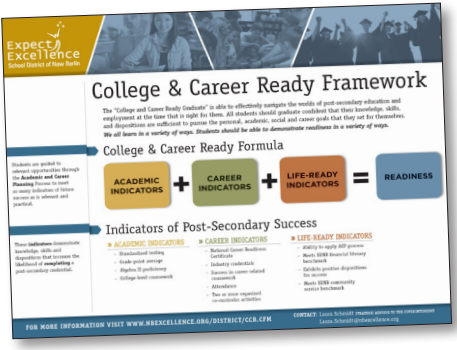
- Careers and Communication Course
- Career Days and Field Experiences
- Academic and Career Planning
- Classroom Presentations
- Elective Coursework
- Co-curriculars

PREPARATION GRADES 9-12

(Personalized to Post-Secondary Plan)

- Experiential learning
- Technical training/credentials
- College-level coursework
- Employability and personal finance
- College fairs and college visits
- Career coaches

For more information about the district’s college and career readiness programming visit: www.nbboxcellence.org/district/ccr.cfm



Acknowledging that students learn in a variety of ways, we believe they should be able to demonstrate their readiness to effectively navigate the worlds of higher education and employment in a variety of ways. In order to measure student progress toward this goal, we use a number of researched indicators that are proven to lead to higher levels of post-secondary success. Students are guided to relevant opportunities through the Academic and Career Planning Process to meet as many indicators of future success as is relevant and practical. Based on these academic, career and life-ready indicators, we have determined district-valued benchmarks which students are encouraged to achieve in order to demonstrate college and career readiness in the School District of New Berlin.

For more information about how the district measures progress towards college and career readiness visit: www.nbboxcellence.org/district/ccr-progress.cfm

THE NEXT MOVE IS YOURS...
Come see for yourself all the great things happening at New Berlin West Middle/High.
Call us at 262.789.6400 to arrange for a personalized tour.